

ADVANTAGES:

- **Simple, space-saving arrangement**
- **90° Merge capabilities from the left, right, or both sides**
- **High quality stainless steel finish**

OVERVIEW:

The right-angle merge is an alternate means of conveying baggage through a 90° change in direction. Typically located at the head-end of check-in conveyors, this configuration assists in transferring baggage to airside operations via a take-away conveyor that feeds from the left, right, or both sides. While power turns are generally the preferred method, the right angle merge is used due to its simplicity and space saving characteristics.

Designed to minimize baggage jams, the 90° merge incorporates a minimum 2" (51mm) cascade from the preceding check-in conveyor onto the take-away conveyor. Also, an optional stainless steel turning drum can be added to assist in transfer process.

Right-angle merge conveyors are manufactured for standard belt widths, and are typically 3" (76mm) wider than the adjacent check-in conveyor width.



CONSTRUCTION

- Variable lengths to correspond with check-in conveyor widths
- Removable flank plates to facilitate the removal of rollers or components for maintenance purposes

90° merges are designed as an additional feature to the tail end of general transport take-away conveyors. The end-section of the conveyor, exposed to the public, is modified to accept stainless trim that accommodates easy belt adjustment and maintenance. The overall length of the merge module is dependent on the check-in conveyor belt width, and is built to suit site conditions.

Each end section is fitted with a removable 6" (152mm) diameter roller and screw adjustment is provided to accommodate conveyor belt tracking.

TRIM / FINISHING

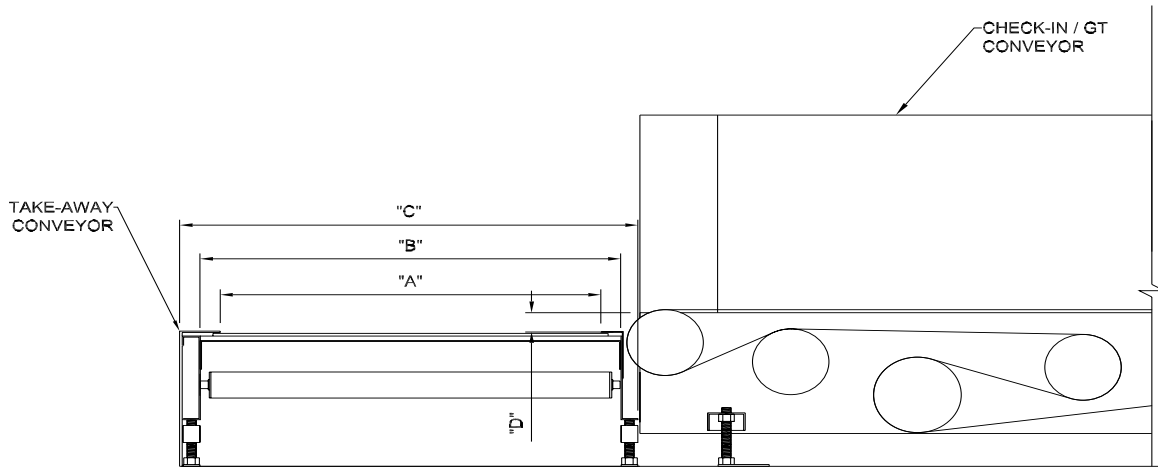
- 14 gauge stainless steel, #4 brush finish

All exposed conveyor surfaces are clad in stainless steel cladding to provide a uniform finish with the adjacent check-in conveyor(s). A removable front panel exposes the mechanical components and provides easy access for belt adjustments and maintenance.

CONVEYOR BELTING

- Smooth, black, PVC coating one side, 2-ply woven polyester

When a 90° merge section is integrated with a general transport conveyor, the belting typically matches that used on check-in conveyors.



90 DEGREE MERGE SPECIFICATIONS	
Description	G&S Standards
Dimensions	
Belt Width ("A")	28 3/16" (716mm), 31 3/16" (792mm), 34 3/16" (868mm), 46 3/16" (1173mm)
Overall Inside Width ("B")	33" (838mm), 36" (914mm), 39" (991mm), 51" (1295mm)
Overall Outside Width ("C")	36" (914mm), 39" (991mm), 42" (1067mm), 54" (1372mm)
Cascade Height ("D")	2 - 3 1/2" (51 - 89mm)
Specifications	
Speed	As per customer
Load Capacity (Live Load)	40 lbs/ft (59.52 kgs/m) maximum