

**ADVANTAGES:**

- **Durable, Rugged Construction**
- **Simple Design; Built to Suit Site-Specific Dimensions**
- **Trimmed and finished with stainless steel**

**OVERVIEW:**

The oversized baggage slide is ideal for presenting large, oversized articles for baggage claim purposes. Designed with ergonomics in mind, the low profile design allows oversized baggage to be easily retrieved by the public.

Manufactured to suit site-specific dimensions, a typical baggage slide is comprised of an extra wide stainless steel surface that is sloped at a gentle angle of inclination through a wall opening. The exposed public end is bordered on three sides with four inch wide side guards set at eight inches off the ground.

Designed with operations staff in mind, the airside dispensing height typically matches the height of baggage tugs. This allows operations staff to easily and safely present the oversized baggage to the public.

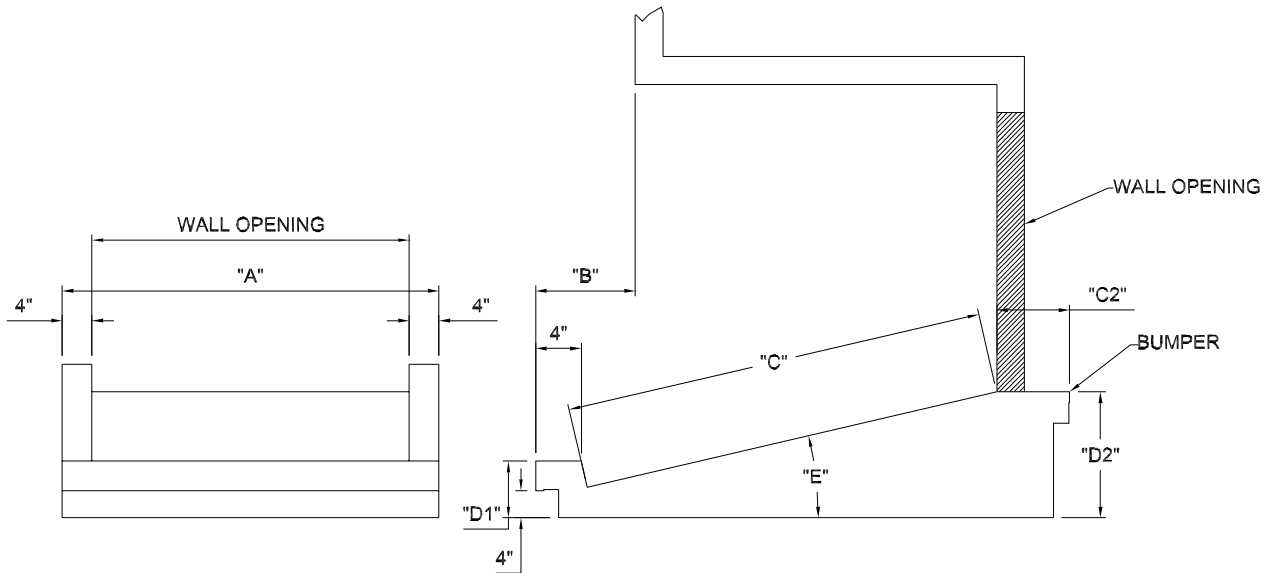
The resulting overall design is both aesthetically pleasing and ergonomically sensitive.



**ADDITIONAL OPTIONS**

An optional polyurethane rubber bumper can be installed at the bottom of the oversized baggage slide to prevent any undue damage caused as baggage comes to rest against the front rail.

A stainless steel gravity roller surface can also be added to the slide. With the assistance of gravity, baggage is easily promoted to the front of the slide and readily accessible to the public.



OVERSIZE BAGGAGE SLIDE SPECIFICATIONS	
Description	G&S Standards
<b>Dimensions</b>	
Overall Width ("A")	As per site conditions
Slide Protrusion ("B")	As per site conditions
Length ("C1")	105" (2667mm) maximum
Sill Length ("C2")	Optional; as per site conditions
Floor to Top of Trim @ Outfeed ("D1")	8" (203mm) minimum
Floor to Top of Trim @ Infeed ("D2")	As per site conditions