

ADVANTAGES

- **Ideal for inserting, merging, and loading baggage onto conveyors from above**
- **Simple, durable design**
- **Available for standard widths**

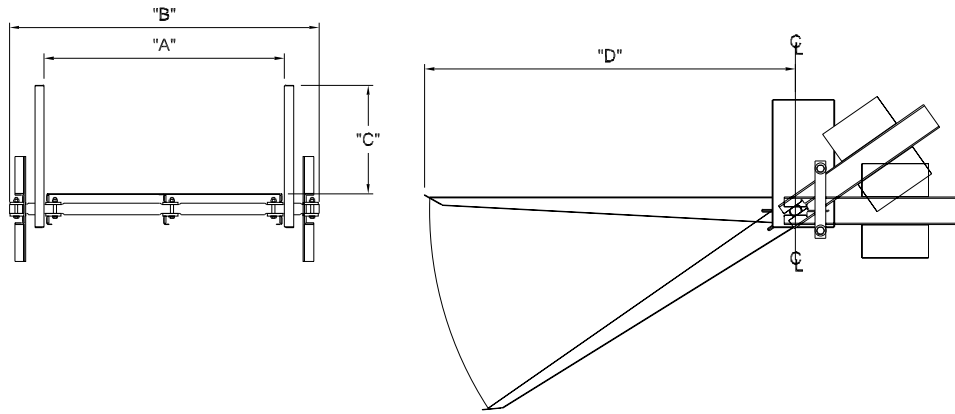
OVERVIEW

The tip chute is ideal for re-inserting or merging baggage where one conveyor is positioned vertically above another. It is also suitable for loading baggage make-up devices such as the pallet loop conveyor.

Designed to mount at the end of a standard general transport conveyor drive section, this unit comes complete with tip chute, spill plate, side guards, and counterweights. Each tip chute comes complete with a removable protective safety enclosure over each counterweight mechanism ensuring safety to operators and maintenance personnel.

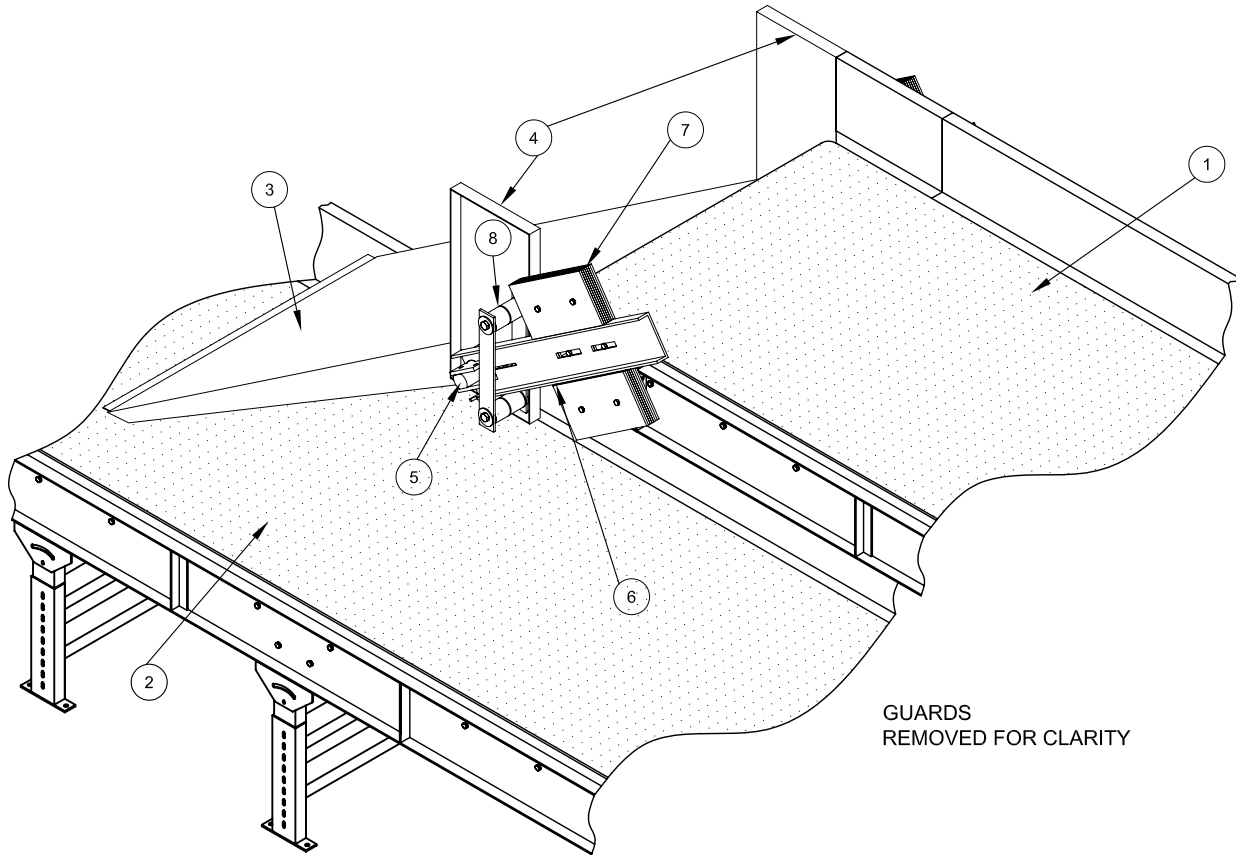
The simple, durable design is manufactured in a standard 6'-6" (1981mm) length or to suit site conditions. The tipping angle and counterweight positions are easily adjusted and can be fine-tuned to optimize regular operations. The tip chute is designed to merge baggage at a dispensing angle typically no greater than 30°.





TIP CHUTE SPECIFICATIONS	
Description	G&S Standards
Dimensions	
Betw een Frame Width ("A")	33" (838mm), 36" (914mm), 39" (991mm), 51" (1295mm)
Overall Width ("B")	48½" (1232mm), 51½" (1308mm), 54½" (1384mm), 66½" (1689mm)
Side Guard Height ("C")	9" (229mm), 12" (305mm), 21" (533mm)
Chute Length ("D")	72" (1829mm)

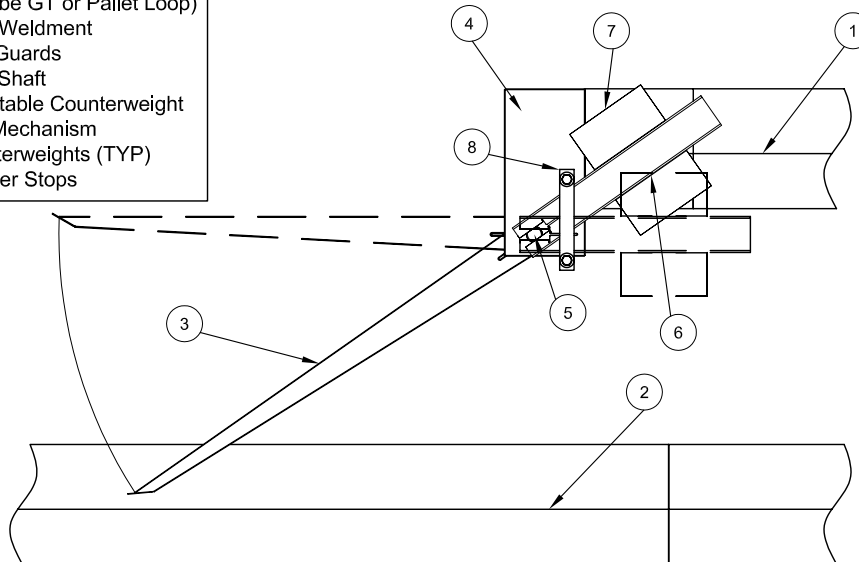
TIP CHUTE



GUARDS
REMOVED FOR CLARITY

ISOMETRIC VIEW

ITEM	COMPONENT
1	Upper GT Conveyor
2	Relieving Conveyor (Can be GT or Pallet Loop)
3	Deck Weldment
4	Side Guards
5	Pivot Shaft
6	Adjustable Counterweight Arm Mechanism
7	Counterweights (TYP)
8	Bumper Stops



ELEVATION VIEW